

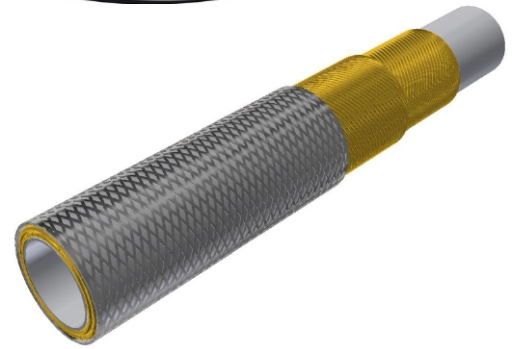


Applications

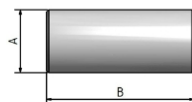
Automotive: Hot glue dispensing

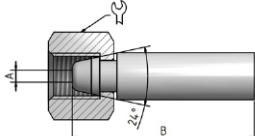
Technical Information

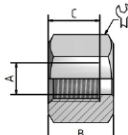
Inner Core: Polytetrafluorethylene (PTFE)
Pressure Support: 2 layers of high-tensile steel wire
Outer Cover: 1 braided layer of galvanized steel wire
Color: -
Temperature: -70°C to +200°C [-94°F to 392°F]




Ø ID	Ø OD	Working Pressure -- (SF 4,0:1)	Burst Pressure	Bend Radius	Weight	Insert ID
24,2 mm	31,7 mm	--	275 bar	240 mm	1,205 kg/m	19,0 mm
0,95 inch	1,25 inch	--	3.988 psi	9,45 inch	0,807 lbs/ft	0,75 inch

Part no.	Thread	Material	Dimensions (mm)				Sleeve
			A	B	C	⌀	
Sleeve							
T00.25.03.00	-	Steel	-	-	-	-	

Part no.	Thread	Material	Nut	Dimensions (mm)				Insert
				A	B	C	⌀	
Female swivel 24°/60°								
T03.25.30.00-3	M42x2	Steel	T03.42.00	-	-	-	-	

Part no.	Thread	Material	Relief bores	Dimensions (mm)				Swivel nut
				A	B	C	⌀	
Swivel nut								
T03.42.00	M42x2	Steel	1 radial	-	-	-	-	

Part no.	Mesh length (mm)	Overall length (mm)	Breaking strength (kN)	Suitable for SPIR STAR® hose outer diameter (mm)	Hose securing grip
Hose securing grip short version					
9204400	600,00	820,00	35,10	30-40	

Important Information!

1. If used as a steam hose the max. working pressure is 203 psi (14bar) and the max. temperature is +482°F (+250°C).
2. The burst and working pressure applies to working temperatures from +20°C to +50°C.
Temperature correction factors: (20°C/1,0), (100°C/0,95), (150°C/0,90), (200°C/0,83).
3. With dynamic stress, the bend radius should at least be doubled. The radius should be adjusted to the conditions.

KF hoses are intended for being used as basic hoses for heating hose systems. They do not have an outer cover, and the wires are not protected against corrosion. It is not allowed to use these hoses in a "normal" hose assembly without taking the right steps to prevent the corrosion of the wires because there exists the risk of injury as well as the possibility of the failure of the hose assembly.

KF hoses are available as a special execution with a plastic outer cover. For further information, please contact our SPIR STAR sales personnel.

Production related variations of the burst pressure of up to 5 % are possible. Other colors upon request.

The safety factors between the burst pressure and the working pressure as well as the test pressure depend on the operating conditions. For gaseous media the outer cover is to be pinpricked.

Regarding the safety factor for gaseous media please contact your local SPIR STAR® assembling center.

The indicated working pressure refers to the hose only. Depending on the used fitting the permitted working pressure of a hose assembly may be less.

**) Blast-Pro® fittings may only be used for tube cleaning operations inside the tube. They have not been designed for the use outside of tubes.*

We reserve our rights for technical changes without notice. Subject to printing errors.